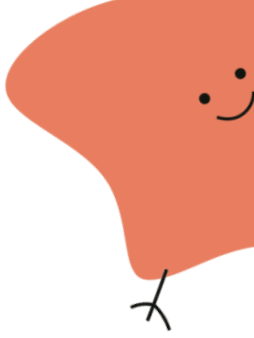


# FÖRIJ



## THE FUNCTIONAL MEAL BAR

### 20% DV VITAMIN D

Bio-available tested Vitamin D...  
No sun? No problem!

### VITAL BRAIN NUTRIENTS

Lion's Mane extract to stimulate  
growth in your noggin's nerve cells

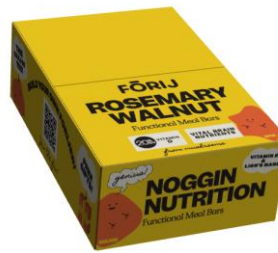
### CLEAN INGREDIENTS

Real flavor from whole food,  
non-GMO ingredients

### OATMEAL RAISIN



### ROSEMARY WALNUT



8 60009 89353 5

4.25 (W) \* 2.5 (H) \* 6.5 (L)



8 60009 89350 4

4.25 (W) \* 0.5 (H) \* 2 (L)



8 60009 89354 2

4.25 (W) \* 2.5 (H) \* 6.5 (L)



8 60009 89351 1

4.25 (W) \* 0.5 (H) \* 2 (L)

#### Ingredients:

Almond Flour, Raisins, Butter, Oats, Honey, Cinnamon, Cassava Flour, Flax Meal, Lecithin, Salt, Baking Soda, Vanilla Extract, Nutmeg, Clove, Rowanberry Extract, Rosemary Extract, Rice Syrup, Grape Juice, Lion's Mane Extract, Organic Vitamin D2 Mushroom Powder

**Contains Almond**

#### Ingredients:

Almond Flour, Walnuts, Butter, Coconut Sugar, Honey, Cassava Flour, Flax Meal, Rowanberry Extract, Lecithin, Dried Rosemary, Sea Salt, Baking Soda, Rosemary Extract, Rice Syrup, Grape Juice, Lion's Mane Extract, Organic Vitamin D2 Mushroom Powder

**Contains Almond, Walnut**

**Nutrition Facts** Servings Per Container: 1, Serving Size 1 bar (56g)  
Amount Per Serving: Calories 290, Total Fat 20g (26% DV), Saturated Fat 4.5g (23% DV),  
Trans Fat 0g, Cholesterol 15mg (5% DV), Sodium 230mg (10% DV), Total Carb. 27g (10%  
DV), Dietary Fiber 5g (18% DV), Total Sugars 13g incl. 4g Added Sugars, Protein 7g, Vitamin  
D 4mcg (20% DV), Calcium 100mg (8% DV), Iron 0.8mg (4% DV), Potassium 320mg (6%  
DV). The Daily % Value (DV) tells you how much a nutrient in a serving of food contributes  
to a daily diet. 2,000 calories a day is used for general nutrition advice.

**Nutrition Facts** Servings Per Container: 1, Serving Size 1 bar (56g)  
Amount Per Serving: Calories 330, Total Fat 28g (36% DV), Saturated Fat 5g (25% DV),  
Trans Fat 0g, Cholesterol 15mg (5% DV), Sodium 220mg (10% DV), Total Carb. 17g (6%  
DV), Dietary Fiber 4g (14% DV), Total Sugars 9g incl. 7g Added Sugars, Protein 8g, Vitamin  
D 4mcg (20% DV), Calcium 90mg (6% DV), Iron 0.6mg (4% DV), Potassium 260mg (6%  
DV). The Daily % Value (DV) tells you how much a nutrient in a serving of food contributes  
to a daily diet. 2,000 calories a day is used for general nutrition advice.

**Shelf Life**

12 Months

**One Unit**

2 OZ (57g) Bar

**Units / Caddy**

9

**Units / Case**

18